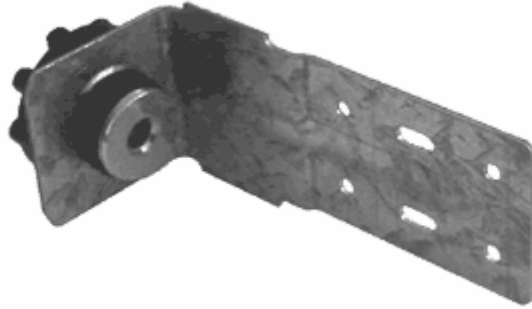


THE RSIC LOW PROFILE WALL SYSTEM

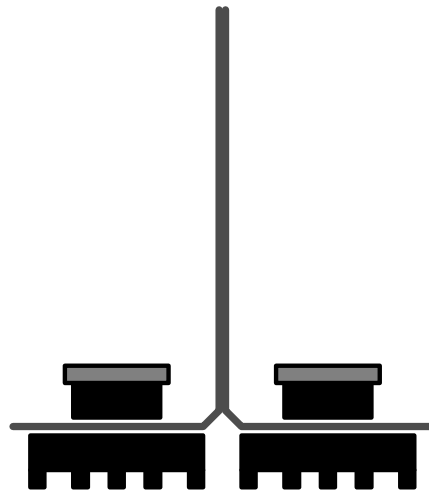


The RSIC-DC04 low profile wall system has been developed to provide a low profile, high performance, noise control system. The RSIC-DC04 or the RSIC-DC04x2 are used to support the studs in a wall or joists in a ceiling system. These systems are adjustable to allow for a low profile (1/2" to 2") separation. The RSIC-DC04 and RSIC-DC04x2 clips are designed to support additional studs (in walls), or joists (in ceilings) separate from the structural framing members.

RSIC-DC04



RSIC-DC04x2



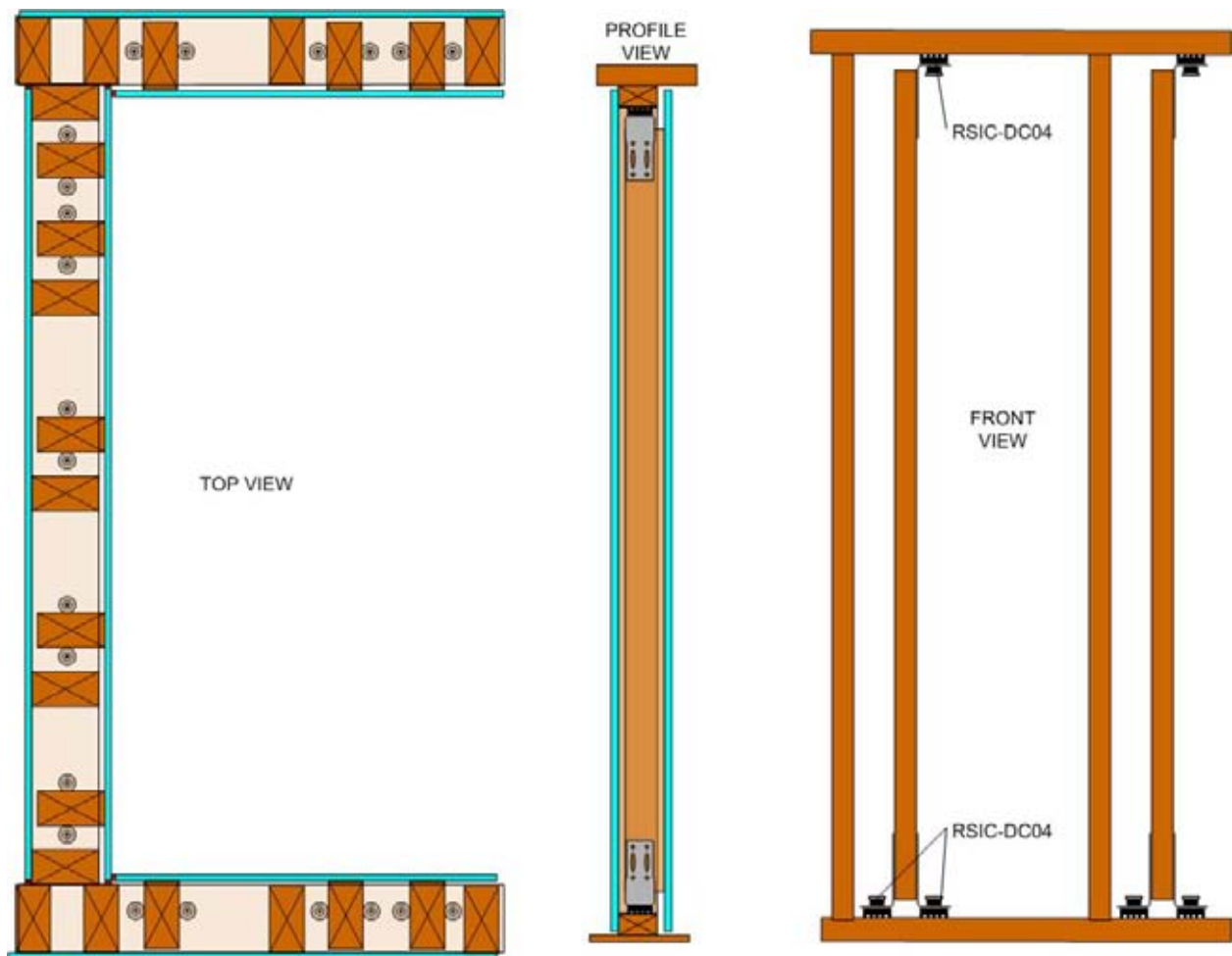
Note: The RSIC-DC04 and RSIC-DC04x2 are not designed to carry structural loads. The RSIC-DC04 and RSIC-DC04x2 are intended to support the loads of gypsum board and uniform loads only. Focused loads and point loads must be engineered by a licensed professional.

PAC International, Inc. Tel: (866) 774-2100 Fax: (866) 649-2710 Web Site: www.pac-intl.com

THE RSIC LOW PROFILE WALL SYSTEM

RSIC-DC04 Low Profile Wall System (Standard Duty)

The RSIC-DC04 Low Profile Wall System Standard Duty consists of two RSIC-1 DC04 clips supporting the bottom of each Stud, and one RSIC-DC04 supporting the top of each stud.

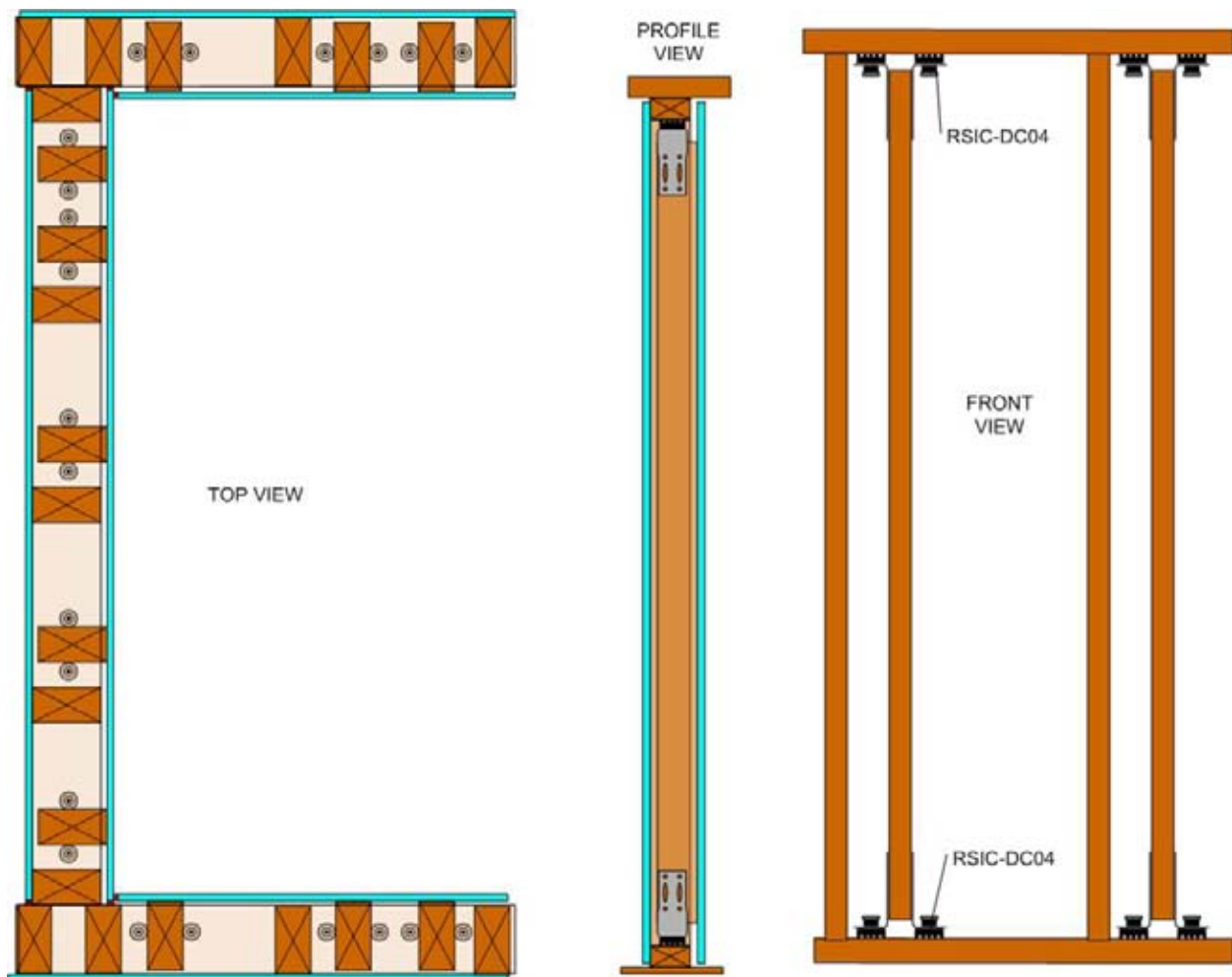


PAC International, Inc. Tel: (866) 774-2100 Fax: (866) 649-2710 Web Site: www.pac-intl.com

THE RSIC LOW PROFILE WALL SYSTEM

RSIC-DC04 Low Profile Wall System (Heavy Duty)

The RSIC-DC04 Low Profile Wall System Heavy Duty consists of two RSIC-DC04 clips supporting the bottom of each Stud, and two RSIC-DC04 supporting the top of each stud.

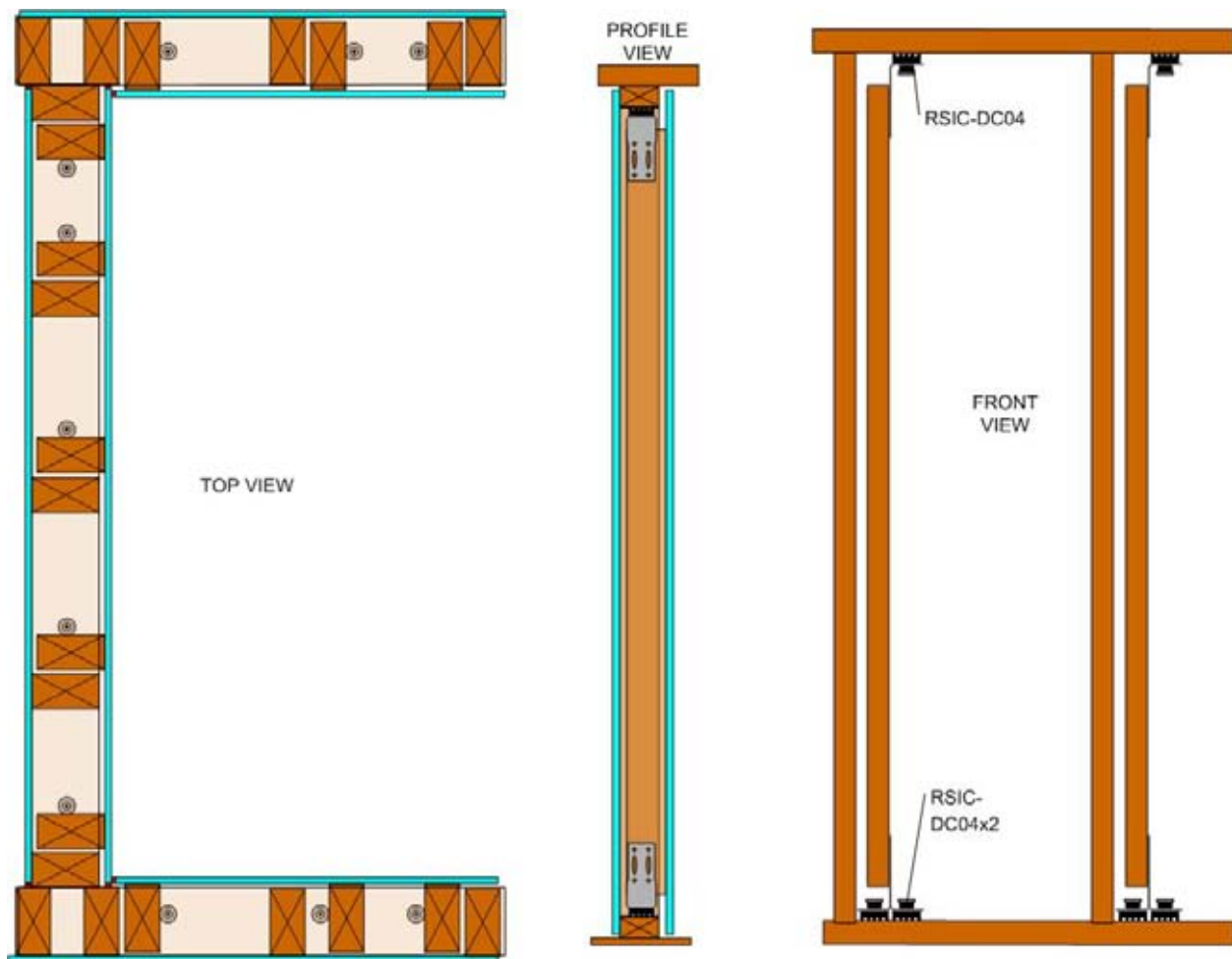


PAC International, Inc. Tel: (866) 774-2100 Fax: (866) 649-2710 Web Site: www.pac-intl.com

THE RSIC LOW PROFILE WALL SYSTEM

RSIC-DC04 Low Profile Wall System (Standard Duty) RSIC-DC04x2 Design

The RSIC-DC04x2 Low Profile Wall System Standard Duty consists of one RSIC-DC04x2 clips supporting the bottom of each Stud, and one RSIC-DC04 supporting the top of each stud.

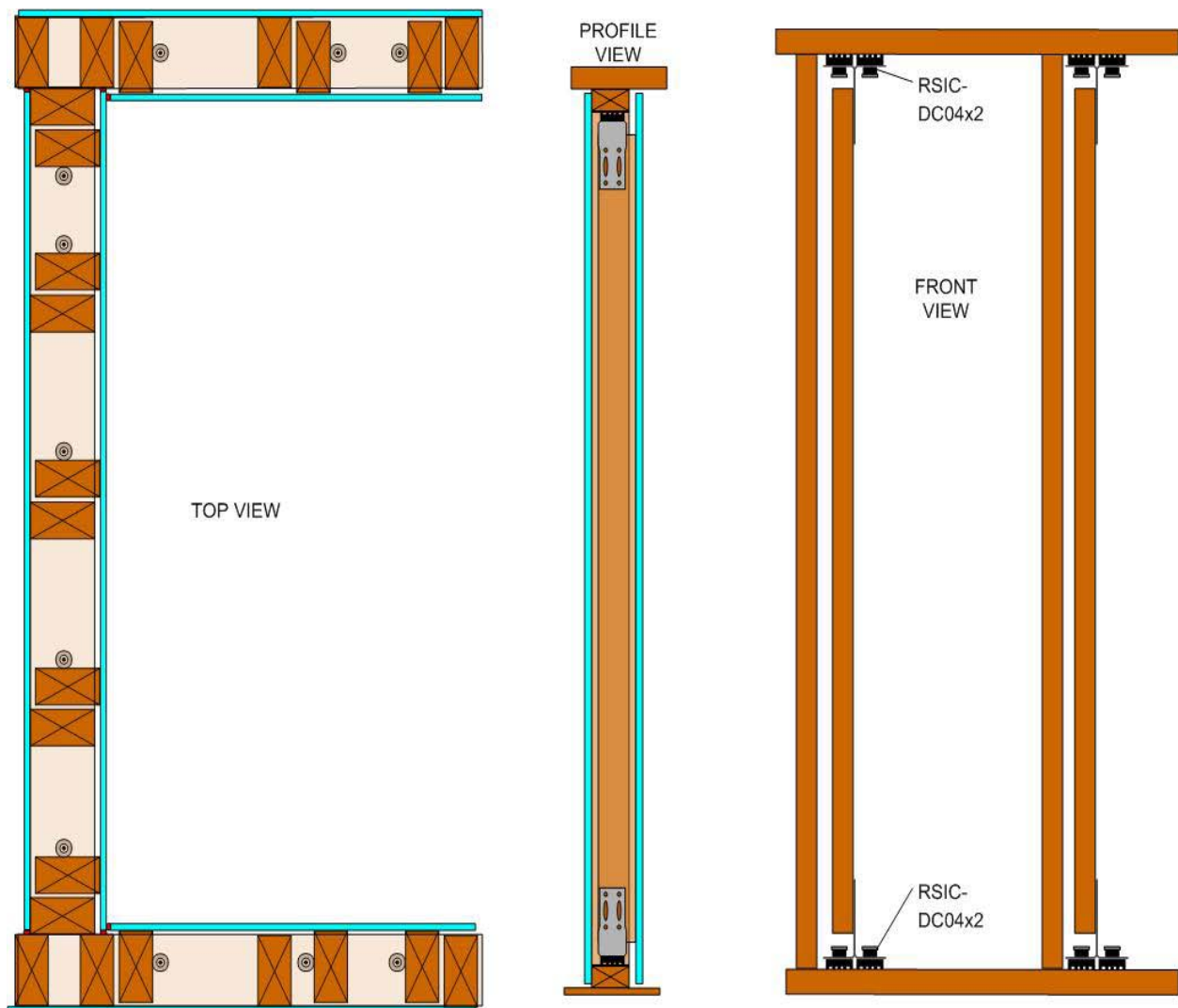


PAC International, Inc. Tel: (866) 774-2100 Fax: (866) 649-2710 Web Site: www.pac-intl.com

THE RSIC LOW PROFILE WALL SYSTEM

RSIC-DC04 Low Profile Wall System (Heavy Duty) RSIC-DC04x2 Design

The RSIC-DC04x2 Low Profile Wall System Heavy Duty consists of one RSIC-DC04x2 clips supporting the bottom of each Stud, and one RSIC-DC04x2 supporting the top of each stud.



PAC International, Inc. Tel: (866) 774-2100 Fax: (866) 649-2710 Web Site: www.pac-intl.com

THE RSIC LOW PROFILE WALL SYSTEM

