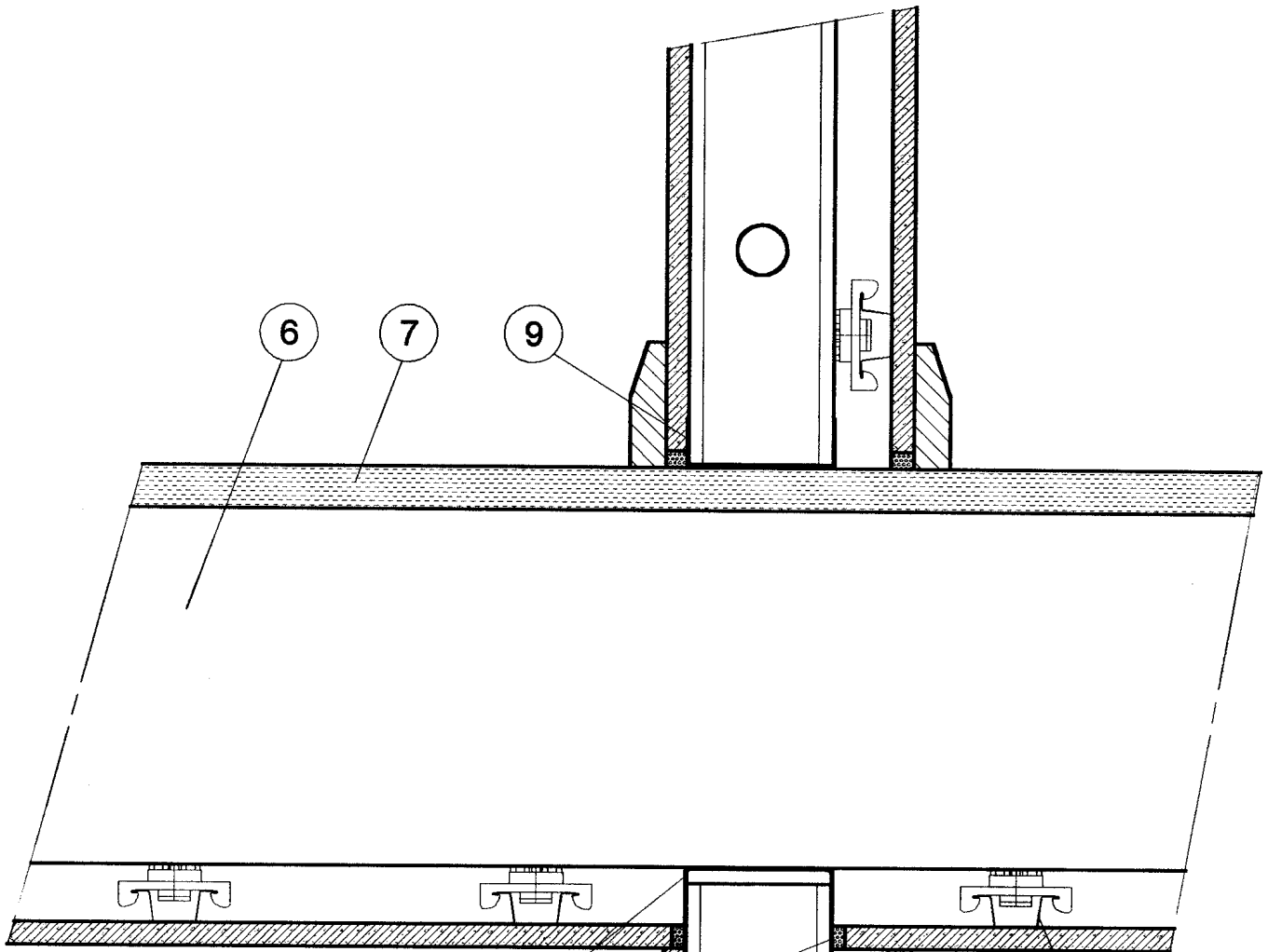


WALL TO CEILING / FLOOR JUNCTION STEEL STUD



1. STEEL STUD
2. RSIC - 1
3. FURRING CHANNEL
7/8" X 25 GAUGE
4. GYPSUM WALL BOARD
5. CAULK INTERSECTIONS
WITH AN APPROVED
'FIRE TESTED ACOUSTIC'
PRODUCT.
6. FLOOR JOIST
7. FLOORING
8. TOP TRACK DEEPLUG
(2 1/2" MINIMUM)
9. BOTTOM TRACK

