

RSIC-1 ACOUSTIC ASSEMBLY

WALL ASSEMBLY

DIRECT FIX TO WOOD STUD

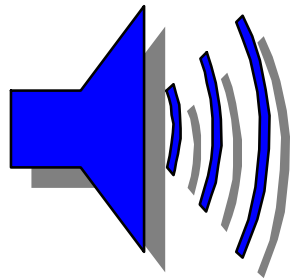


Toll Free 866-774-2100 • Telephone 503-649-7700

www.pac-intl.com



RAL 209 Assembly 2 STC 56

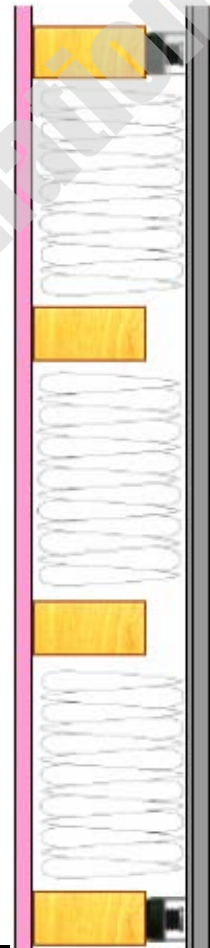


STC 56

CONSTRUCTION

- * 5/8" Gypsum
- * 7/8" x 25 guage furring Channel @ 24" o.c.
- * RSIC-1 clips at 48" o.c.
- * 2x4 wood studs @ 16" o.c.
- * 6" unfaced fiberglass insulation cavity fully filled
- * 5/8" Gypsum

- * Test Number TL01-209 RAL
- * UL U301, U305, U309, U311, U331, U334



UL U301, U305, U309
U311, U331, U334

**SOUND
TRANSMISSION
CLASS**

STC 56

[CLICK HERE for Full Test Report](#)