

RSIC-1 ACOUSTIC ASSEMBLY

WALL ASSEMBLY

DIRECT FIX TO STUD

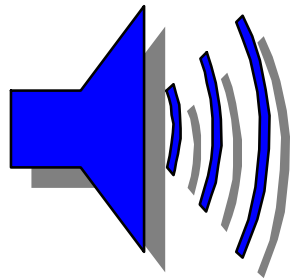


Toll Free 866-774-2100 • Telephone 503-649-7700

www.pac-intl.com



RAL 212 Assembly 5 STC 63

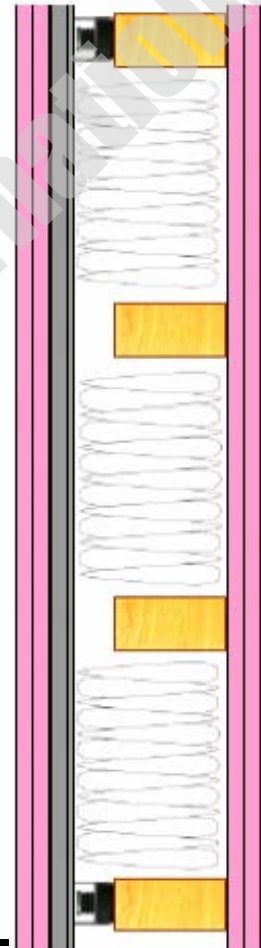


STC 63

CONSTRUCTION

- * 2 Layers 5/8" Gypsum
- * 7/8" x 25 guage furring Channel @ 24" o.c.
- * RSIC-1 clips at 48" o.c.
- * 2x4 wood studs @ 16" o.c.
- * 6" unfaced fiberglass insulation cavity fully filled
- * 3 Layers 5/8" Gypsum

- * Test Number TL01-212 RAL
- * UL U305, U309, U311, U331



UL U305, U309

U311, U331

**SOUND
TRANSMISSION
CLASS**

STC 63

[CLICK HERE for Full Test Report](#)