

RSIC ACOUSTIC ASSEMBLY

NOISE CONTROL WALL ASSEMBLY



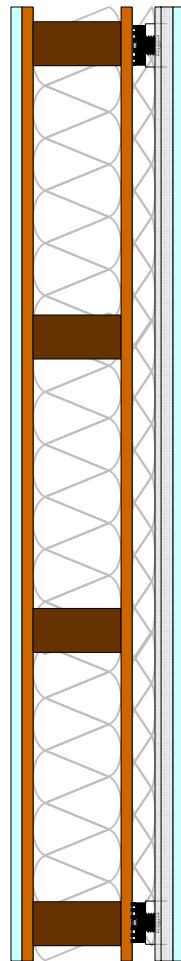
DIRECT FIX TO WOOD

WEAL 06-449 STC 53

CONSTRUCTION

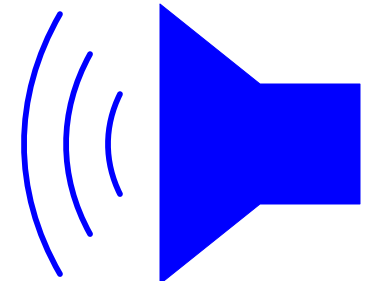
- 5/8" Gypsum Wall Board
- 1/2" Plywood
- 2x4 Wood Stud
- 3.5" Fiberglass Batt Insulation
- 1/2" Plywood
- RSIC-1 clips
- 1.5" Insulation
- 7/8" Drywall Furrign Channel
- 5/8" Gypsum Board

WEAL 06-449 STC 53



1 Hour

U344



STC 53

RSIC ACOUSTIC ASSEMBLY

NOISE CONTROL WALL ASSEMBLY

DIRECT FIX TO WOOD

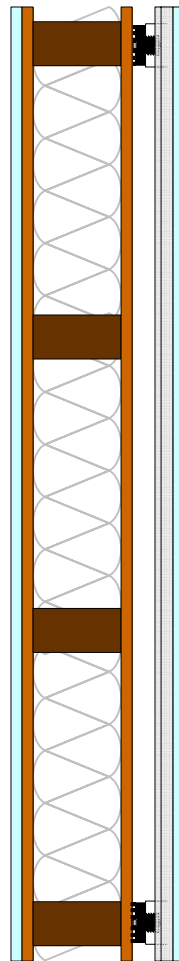


WEAL 06-448 STC 47

CONSTRUCTION

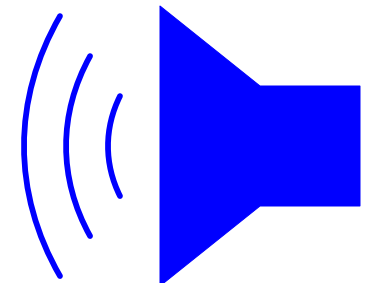
- 5/8" Gypsum Wall Board
- 1/2" Plywood
- 2x4 Wood Stud
- 3.5" Fiberglass Batt Insulation
- 1/2" Plywood
- RSIC-1 clips
- 7/8" Drywall Furrign Channel
- 5/8" Gypsum Board

WEAL 06-448 STC 47



1 Hour

U344



STC 47