

# RSIC-1 ACOUSTIC ASSEMBLY



Toll Free 866-774-2100 • Telephone 503-649-7700

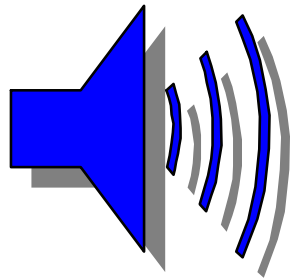
[www.pac-intl.com](http://www.pac-intl.com)

**WALL ASSEMBLY**

**DIRECT FIX TO WOOD STUD**



**WS1 Timber STC 55**



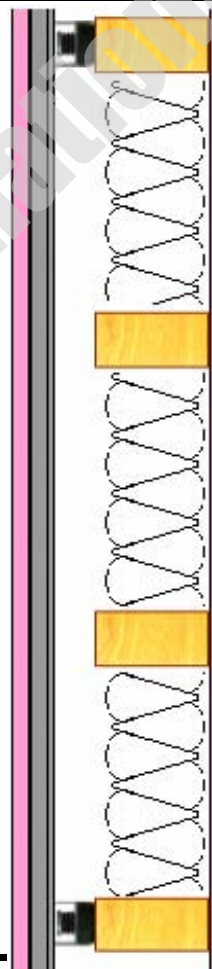
# STC 55

## CONSTRUCTION

- \* 5/8" Gypsum
- \* 7/8" x 25 guage furring Channel @ 24" o.c.
- \* RSIC-1 clips at 48" o.c.
- \* 2x4 wood studs @ 16" o.c.
- \* 3.5" unfaced fiberglass insulation
- \* 5/8" Gypsum

\* Test number ATF 940

\* UL U301, U305, U309, U311, U331, U334



**UL U301, U305, U309  
U311, U331, U334**

**SOUND  
TRANSMISSION  
CLASS**

**STC 55**