

RSIC-1 ACOUSTIC ASSEMBLY

WALL ASSEMBLY

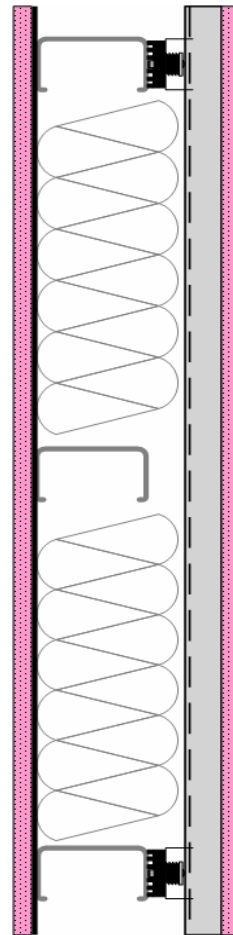


DIRECT FIX TO STEEL STUD

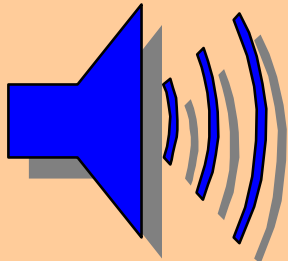
WS SS RAL 06-026 STC 61

CONSTRUCTION

- * 1 layer 5/8" Gypsum Board
- * 1 layer 1/8" 1 lb (UL Listed) MLV
- * 3-5/8" Steel Stud at 24" oc
- * R-19 Insulation 5.5"
- * RSIC-1 48" oc.
- * Drywall Furring Channel at 24" oc
- * 1 layer 5/8" Gypsum Board



RAL Test 06-026



STC 61

1 hour fire rating



UL U419, U423

Riverbank Acoustical Laboratories (RAL)TM
 Laboratory Measurement of Airborne Sound Transmission Loss
 of Building Partitions ASTM E 90-04/NVLAP 08/P06

TEST NUMBER: TL06-026 TEST DATE: FEBRUARY 07, 2006
 Rev. 1: 02/08/06 (Area)
 CLIENT: Acoustiblok
 DESIGNATION: Insulated Steel Stud Wall with 16 oz. Acoustiblok Side1 and RSIC-1 Side2 w 5/8 Inch
 Gypsum Board Each Side

DIMENSIONS: 168" wide x 108" high x 6.75" thick
 AREA: 126.0 ft²
 WEIGHT: 896 lbs AREA WEIGHT: 7.11 lbs/ft²
 SPECIMEN DETAILS:

SOURCE ROOM: Room 2 Volume = 6297.6 ft³ Area = 2066.2 ft²
 RECEIVE ROOM: Room 1 Volume = 6254.5 ft³ Area = 2042 ft²
 FILE NAME: TL06_026_060207_A.doc

FREQ. (Hz)	T.L. (dB)	UNC. (dB) 95%CL	DEF. (dB) <CONT	FREQ. (Hz)	T.L. (dB)	UNC. (dB) 95%CL	DEF. (dB) <CONT
100	27	0.64		800	64	0.15	
125	37	0.53	8	1k	65	0.18	
160	42	0.40	6	1.25k	65	0.12	
200	45	0.57	6	1.6k	66	0.12	
250	50	0.30	4	2k	65	0.08	
315	54	0.34	3	2.5k	66	0.11	
400	57	0.24	3	3.15k	70	0.08	
500	61	0.20		4k	72	0.08	
630	64	0.19		5k	73	0.07	

Sound Transmission Class (STC) = 61

Total Deficiencies = 30

Extended Frequency Data

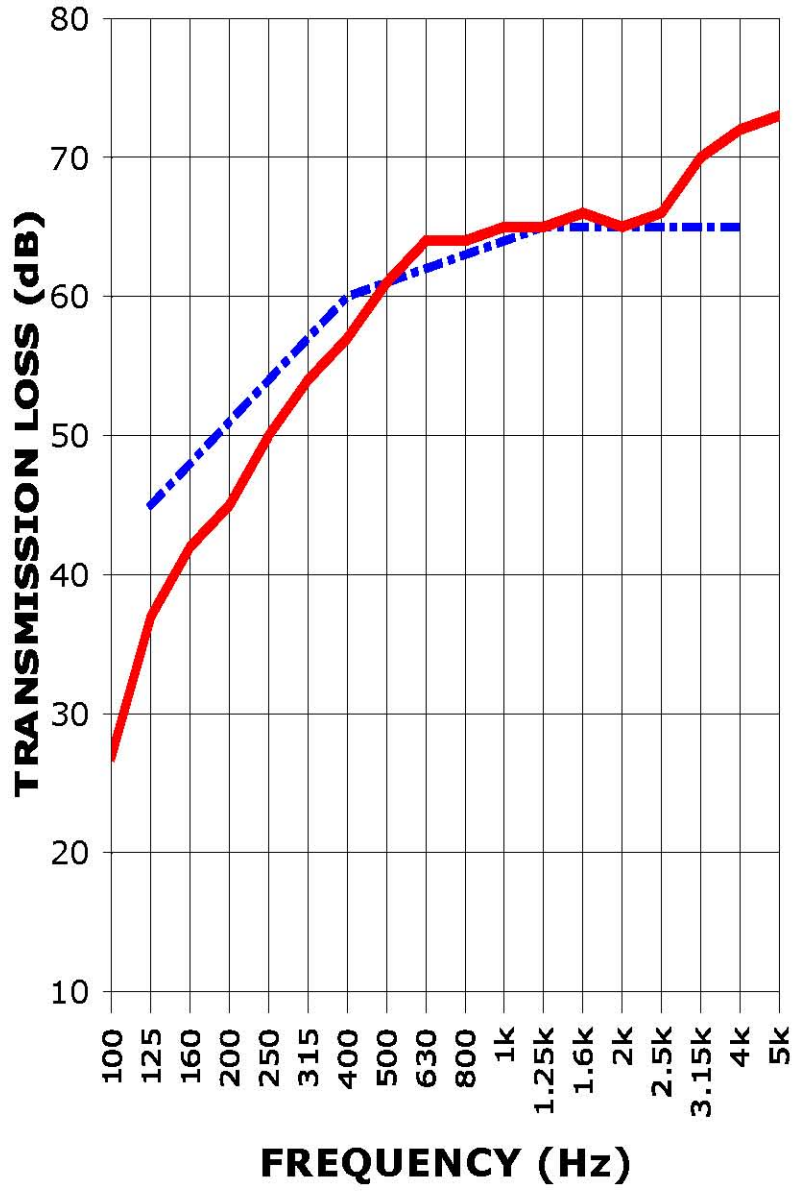
FREQ.	T.L.	UNC.	DEF.	FREQ.	T.L.	UNC.	DEF.
40	20	0.75		6.3k	73	0.06	
50	12	0.65		8k	73	0.04	
63	15	0.77		10k	73	0.08	
80	27	0.58					

R: 59
 OITC: 42

Test Conducted by: Marc Sciaky

This single report page and accompanying graph contain the instantaneous raw data as provided to the client after testing of the specimen. This data, although accurate, is incomplete without the full specimen description, mounting details and signature pages. The full report referenced by the RAL test number above should be consulted for further information regarding these results.

SOUND TRANSMISSION REPORT
RAL - TL06-026



STC = 61



TRANSMISSION LOSS
SOUND TRANSMISSION LOSS CONTOUR