

RSIC-1 ACOUSTIC ASSEMBLY

WALL ASSEMBLY

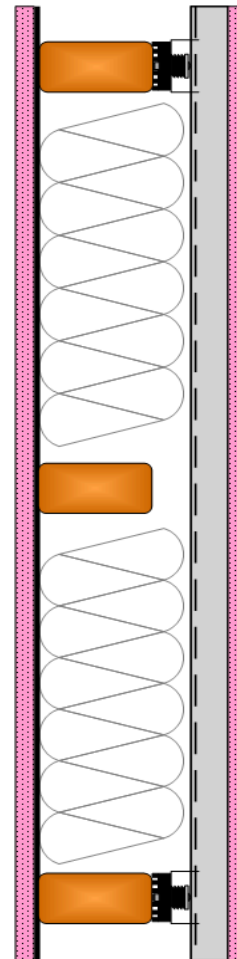


DIRECT FIX TO STEEL STUD

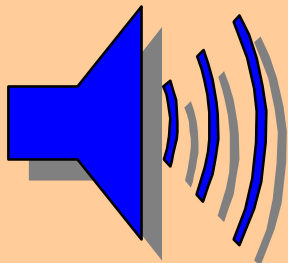
WS SS RAL 06-028 STC 57

CONSTRUCTION

- * 1 layer 5/8" Gypsum Board
- * 1 layer 1/8" 1 lb (UL Listed) Mass Loaded Vinyl
- * 2"x4" Wood Stud 24" oc
- * R-19 Insulation 5.5" cavity fully filled
- * RSIC-1 48" oc.
- * Drywall Furring Channel at 24" oc
- * 1 layer 5/8" Gypsum Board



RAL Test 06-028



STC 57

1 hour fire rating



UL U305

Riverbank Acoustical Laboratories (RAL)TM
 Laboratory Measurement of Airborne Sound Transmission Loss
 of Building Partitions ASTM E 90-04/NVLAP 08/P06

TEST NUMBER: TL06-028 TEST DATE: FEBRUARY 08, 2006

CLIENT: Acoustiblok
 DESIGNATION: Insulated Wood Stud Wall with 16 oz. Acoustiblok Side1 and RSIC-1 Side2 w 5/8 Inch Gypsum Board Each Side

DIMENSIONS: 168" wide x 108" high x 6.625" thick
 AREA: 126.0 ft²
 WEIGHT: 988.5 lbs AREA WEIGHT: 7.85 lbs/ft²
 SPECIMEN DETAILS:

SOURCE ROOM: Room 2 Volume = 6297.6 ft³ Area = 2066.2 ft²
 RECEIVE ROOM: Room 1 Volume = 6254.5 ft³ Area = 2042 ft²
 FILE NAME: TL06_028_060208_A.doc

FREQ. (Hz)	T.L. (dB)	UNC. (dB) 95%CL	DEF. (dB) <CONT	FREQ. (Hz)	T.L. (dB)	UNC. (dB) 95%CL	DEF. (dB) <CONT
100	26	0.69		800	57	0.15	2
125	34	0.80	7	1k	57	0.14	3
160	37	0.57	7	1.25k	61	0.13	
200	42	0.48	5	1.6k	62	0.13	
250	48	0.34	2	2k	60	0.09	1
315	52	0.29	1	2.5k	62	0.09	
400	55	0.25	1	3.15k	65	0.08	
500	57	0.25		4k	67	0.09	
630	57	0.14	1	5k	67	0.04	

Sound Transmission Class (STC) = 57

Total Deficiencies = 30

Extended Frequency Data

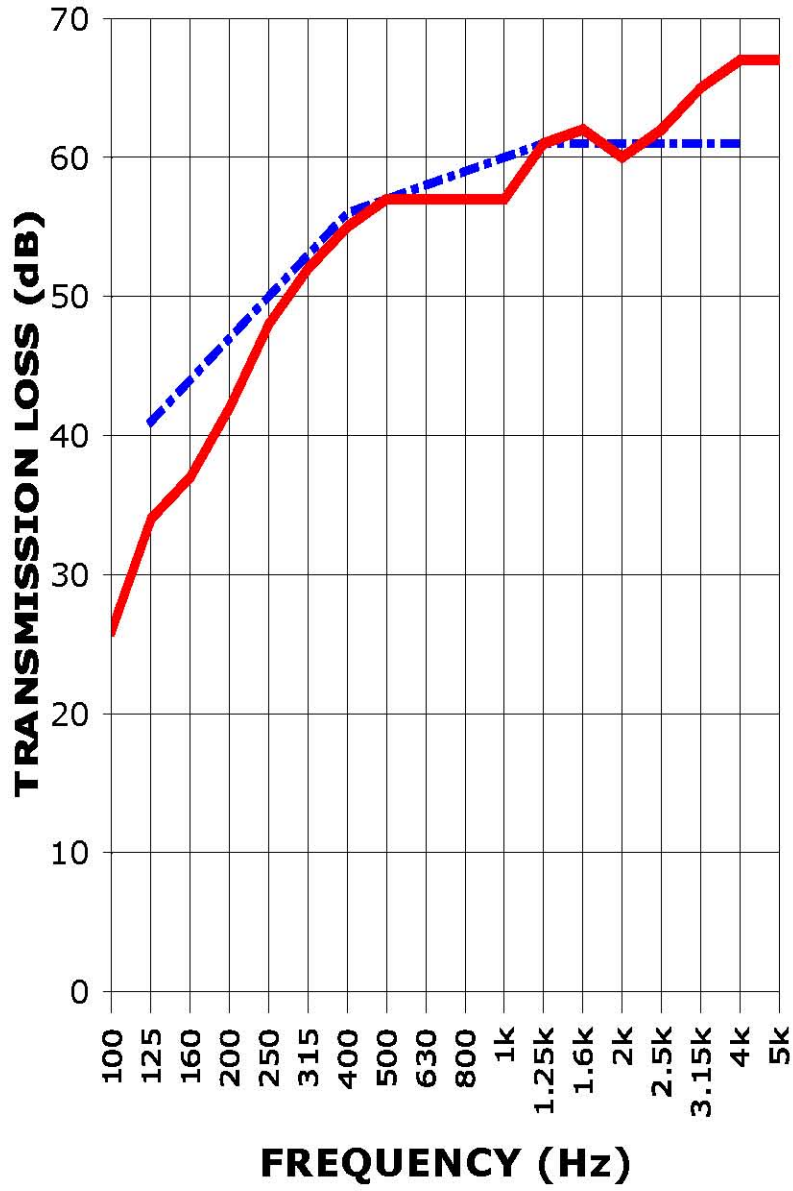
FREQ.	T.L.	UNC.	DEF.	FREQ.	T.L.	UNC.	DEF.
40	20	0.69		6.3k	66	0.08	
50	13	0.84		8k	65	0.05	
63	14	0.94		10k	67	0.08	
80	25	0.42					

R: 56
 OITC: 40

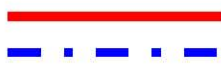
Test Conducted by: Marc Sciaky

This single report page and accompanying graph contain the instantaneous raw data as provided to the client after testing of the specimen. This data, although accurate, is incomplete without the full specimen description, mounting details and signature pages. The full report referenced by the RAL test number above should be consulted for further information regarding these results.

SOUND TRANSMISSION REPORT
RAL - TL06-028



STC = 57



TRANSMISSION LOSS
SOUND TRANSMISSION LOSS CONTOUR