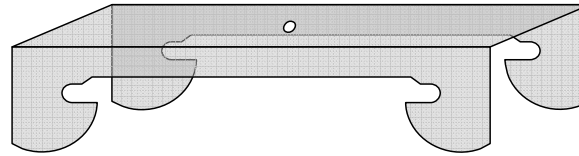


# RSIC-V CLIP ACOUSTIC ASSEMBLY

PAC INTERNATIONAL INC.  
TOLL FREE 866-RSIC-100

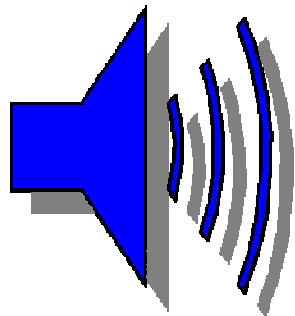
WALL ASSEMBLY

DIRECT FIX TO WOOD STUD

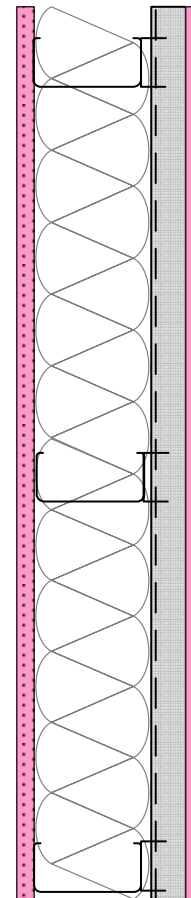


[WWW.PAC-INTL.COM](http://WWW.PAC-INTL.COM)

**WEAL 07-537 Assembly STC 54**



## STC 54



### CONSTRUCTION

- \* 5/8" Gypsum
- \* 3-5/8" 25 Ga Dietrich Ultra Steel studs @ 24" o.c.
- \* 5.5" unfaced fiberglass insulation
- \* RSIC-V clips at 24" o.c.
- \* 7/8" x 25 guage furring Channel @ 24" o.c.
- \* 5/8" Gypsum
  
- \* Test Number TL07-537
- \* UL 1 hour wall assembly. See website for more information



**1 HOUR**  
**U419**

**SOUND**  
**TRANSMISSION**  
**CLASS**

**STC 54**



Date: 08-23-2007

Time: 10:48

WESTERN ELECTRO ACOUSTIC LABORATORY

Automated Transmission Loss Test Number: 07-537

Reference: 1.83E+01 FINAL CALCULATIONS

CONSTRUCTION DETAILS:

- 5/8" Gypsum aboard
- 25 Ga Dietrich Ultra Steel Studs @ 24" oc.
- R-19" GFB Insulation
- RSIC-V @ 24" x 24" oc
- 7/8" 25 Ga DFC @ 24" oc
- 5/8" Gypsum aboard

Mic: ASTM

Source: Lab

Freq	Source Average	Receive Average	Receive Ambient	NR Average	T60 Average	10 LOG T60	ABS Average	10 LOG ABS	TL Average
63	92.1	83.4	33.9	8.7	3.46	5.4	74.04	18.7	8.13
80	97.5	80.6	34.8	16.9	3.19	5	80.31	19	15.93
100	98.1	69.9	41	28.2	3.61	5.6	70.97	18.5	27.83
125	99.2	65.8	38	33.4	4.01	6	63.89	18.1	33.55
160	98.3	59.6	28.8	38.7	3.69	5.7	69.43	18.4	38.51
200	98	54.5	40.6	43.5	3.61	5.6	70.97	18.5	43.39
250	98.6	50.2	28.8	48.3	3.83	5.8	66.89	18.3	48.71
315	98.6	48.3	27.1	50.2	3.92	5.9	65.35	18.2	50.61
400	98.3	46.2	27.5	52.2	4.1	6.1	62.48	18	52.78
500	97.5	44.3	25.8	53.2	4.05	6.1	63.26	18	53.66
630	96.6	42.3	24.7	54.3	3.69	5.7	69.43	18.4	54.22
800	99	45.2	21.5	53.7	3.52	5.5	72.78	18.6	53.31
1000	100.7	45.2	22.6	55.5	3.51	5.5	72.99	18.6	55.02
1250	102.4	43.7	20.2	58.7	3.43	5.4	74.69	18.7	58.15
1600	103.8	43.7	19.1	60	3.2	5.1	80.06	19	59.18
2000	104.4	46.4	19.3	58	3	4.8	85.4	19.3	56.83
2500	105.5	52	20.3	53.5	2.84	4.5	90.21	19.6	52.04
3150	106.5	50.1	21.2	56.4	2.71	4.3	94.53	19.8	54.72
4000	107	46.8	23.6	60.2	2.45	3.9	104.57	20.2	58.14
5000	108.8	44.6	23.8	64.2	2.13	3.3	120.28	20.8	61.52

Specimen Area: 64 sq. ft.

Temperature: 77.9 deg. F

Relative Humidity: 53 %

STC 54

EWR 55

OITC 35