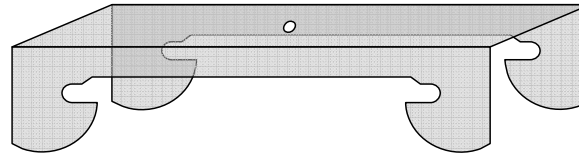


RSIC-V CLIP ACOUSTIC ASSEMBLY

PAC INTERNATIONAL INC.
TOLL FREE 866-RSIC-100

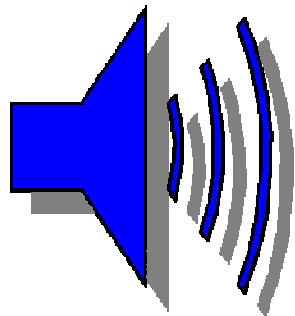
WALL ASSEMBLY

DIRECT FIX TO WOOD STUD

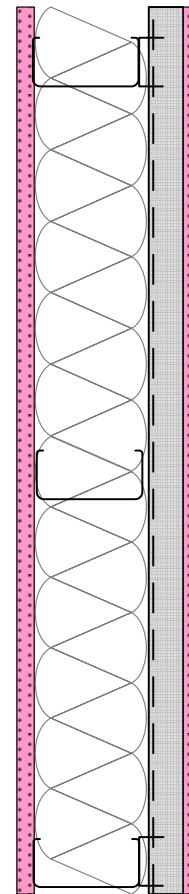


WWW.PAC-INTL.COM

WEAL 07-538 Assembly STC 53



STC 53



CONSTRUCTION

- * 5/8" Gypsum
- * 3-5/8" 20 Ga Dietrich Ultra Steel studs @ 24" o.c.
- * 5.5" unfaced fiberglass insulation
- * RSIC-V clips at 48" o.c.
- * 7/8" x 25 guage furring Channel @ 24" o.c.
- * 5/8" Gypsum

- * Test Number TL07-538
- * UL 1 hour wall assembly. See website for more information



1 HOUR
U419

SOUND
TRANSMISSION
CLASS

STC 53

Date: 08-23-2007

Time: 13:32

WESTERN ELECTRO ACOUSTIC LABORATORY

Automated Transmission Loss Test Number: 07-538

Reference: 1.83E+01 FINAL CALCULATIONS

CONSTRUCTION DETAILS:

- 5/8" Gypsum aboard
- 20 Ga Dietrich Ultra Steel Studs @ 24" oc.
- R-19" GFB Insulation
- RSIC-V @ 24" x 48" oc
- 7/8" 25 Ga DFC @ 24" oc
- 5/8" Gypsum aboard

Mic: ASTM

Source: Lab

Freq	Source Average	Receive Average	Receive Ambient	NR Average	T60 Average	10 LOG T60	ABS Average	10 LOG ABS	TL Average
63	92.2	82.9	33.5	9.3	3.11	4.9	82.31	19.2	8.27
80	97.7	79.9	34.4	17.8	3.18	5	80.49	19.1	16.81
100	98.4	69.7	40.7	28.8	3.61	5.6	70.91	18.5	28.45
125	99.1	64.3	38.4	34.8	4.02	6	63.67	18	35.01
160	98.6	59.1	28.3	39.5	3.65	5.6	70.13	18.5	39.31
200	98	53.9	36.9	44.1	3.55	5.5	72.1	18.6	43.98
250	98.3	50.1	28.5	48.2	3.87	5.9	66.14	18.2	48.65
315	98.6	49.2	28.8	49.4	3.96	6	64.64	18.1	49.73
400	98.1	46.1	30.7	52	4.04	6.1	63.36	18	52.55
500	97.5	44	28.3	53.5	4.04	6.1	63.36	18	53.96
630	96.7	42.7	27.4	54	3.66	5.6	69.94	18.4	53.85
800	99	46.7	24	52.3	3.47	5.4	73.77	18.7	51.77
1000	100.7	46.4	21.3	54.3	3.43	5.4	74.63	18.7	53.7
1250	102.2	45.4	19.8	56.9	3.37	5.3	75.96	18.8	56.2
1600	103.6	46.4	18	57.2	3.19	5	80.24	19	56.28
2000	104.3	50.9	17.1	53.4	2.94	4.7	87.07	19.4	52.1
2500	105.5	55.1	19.1	50.4	2.84	4.5	90.13	19.5	48.96
3150	106.5	53.2	19.6	53.3	2.73	4.4	93.76	19.7	51.64
4000	107.1	50.2	20.9	56.9	2.5	4	102.39	20.1	54.87
5000	108.9	48.4	21.4	60.5	2.19	3.4	116.88	20.7	57.96

Specimen Area: 64 sq. ft.
 Temperature: 78.8 deg. F
 Relative Humidity: 58 %

STC 53
 EWR 55
 OITC 36