

# RSIC ACOUSTIC ASSEMBLY

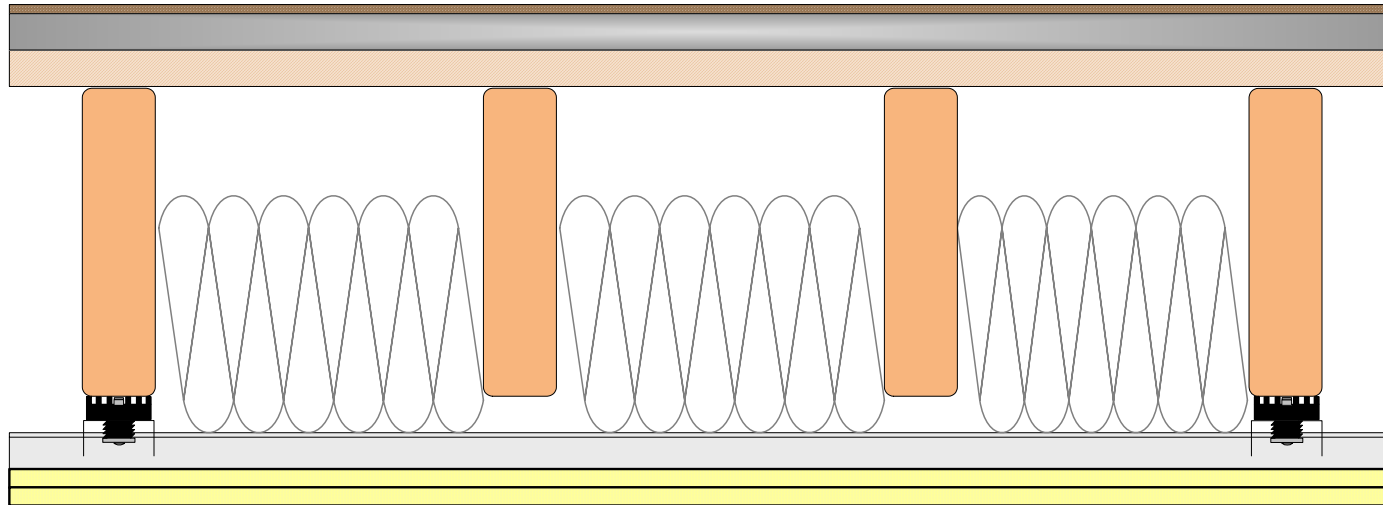
## FLOOR CEILING ASSEMBLY

### DIRECT FIX TO SOLID WOOD JOIST



Toll Free 866-774-2100 • Telephone 503-649-7700

**FCWT RAL IN09-012**



**Fire Resistance Ratings**

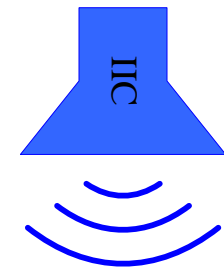
Designs:  
L502, L514, L516, L523,  
L532, L569, L590, L593

### CONSTRUCTION

- 3/8" HARDWOOD FLOORING
- VAPOR BARRIER
- 3/4" LT WT CONCRETE
- 5/8" PLYWOOD SUBFLOOR
- 2" X 10" SOLID WOOD JOIST @ 16" OC
- R-19 FIBERGLASS BATT INSULATION (NOM 6")
- RSIC-1 INSTALLED @ 48" OC
- 7/8" DRYWALL FURRING CHANNEL @ 24" OC
- 2 LAYERS 5/8" FIRE CODE GYPSUM BOARD



**RAL TL09-042**  
**STC 55**



**RAL IN09-012**  
**IIC 54**

**RIVERBANK ACOUSTICAL LABORATORIES (RAL)**